

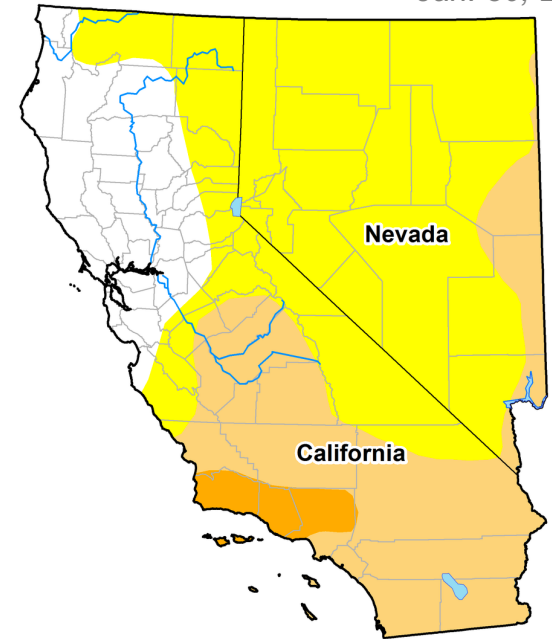
Jan. 30, 2018

California-Nevada Drought Early Warning System

2018 Southern California Winter Status Update

Wednesday, February 7, 2018
1- 4 pm PT

Martin Johnson House
Scripps Institution of Oceanography/UCSD
La Jolla, CA



■ D4 ■ D3 ■ D2 ■ D1 ■ D0



Western Regional
Climate Center



California-Nevada Drought Early Warning System 2018 Southern California Winter Status Update

February 7, 2018

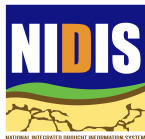
1:00-4:00 pm PT

Martin Johnson House

Scripps Institution of Oceanography/UCSD

La Jolla, CA

- 12:30 Registration open
- 1:00 Welcome & Introductions
Julie Kalansky (SIO/UCSD) & Amanda Sheffield (NOAA/NIDIS)
- 1:10 California Drought & Climate Update
Julie Kalansky (SIO/UCSD)
- 1:30 California Drought & Climate Outlook
Shrad Shukla (UCSB)
- 1:50 Group discussion of conditions and outlook
- 2:00 Recap of Recent Wildfires
Tim Brown (WRCC/DRI) & Nina Oakley (WRCC/DRI)
- 2:30 Break
- 2:45 Regional Monitoring in San Diego County: Are we collecting the needed data?
- 30-minute Panel: Moderated by Dan Cayan (SIO/UCSD)*
Brian D'Agostino (SDGE)
Kris Preston (SDMMP)
Alex Tardy (NWS San Diego)
- 30-minute Group Discussion*
- 3:45 Recap and closing remarks
-



Western Regional
Climate Center



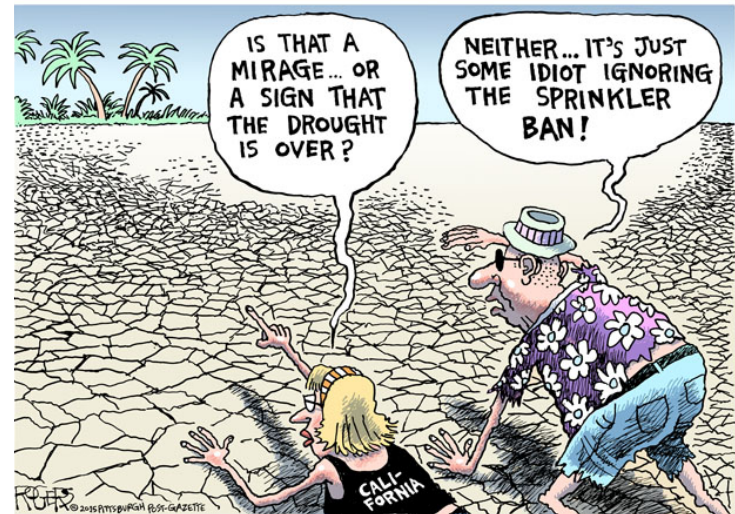
What is NIDIS?

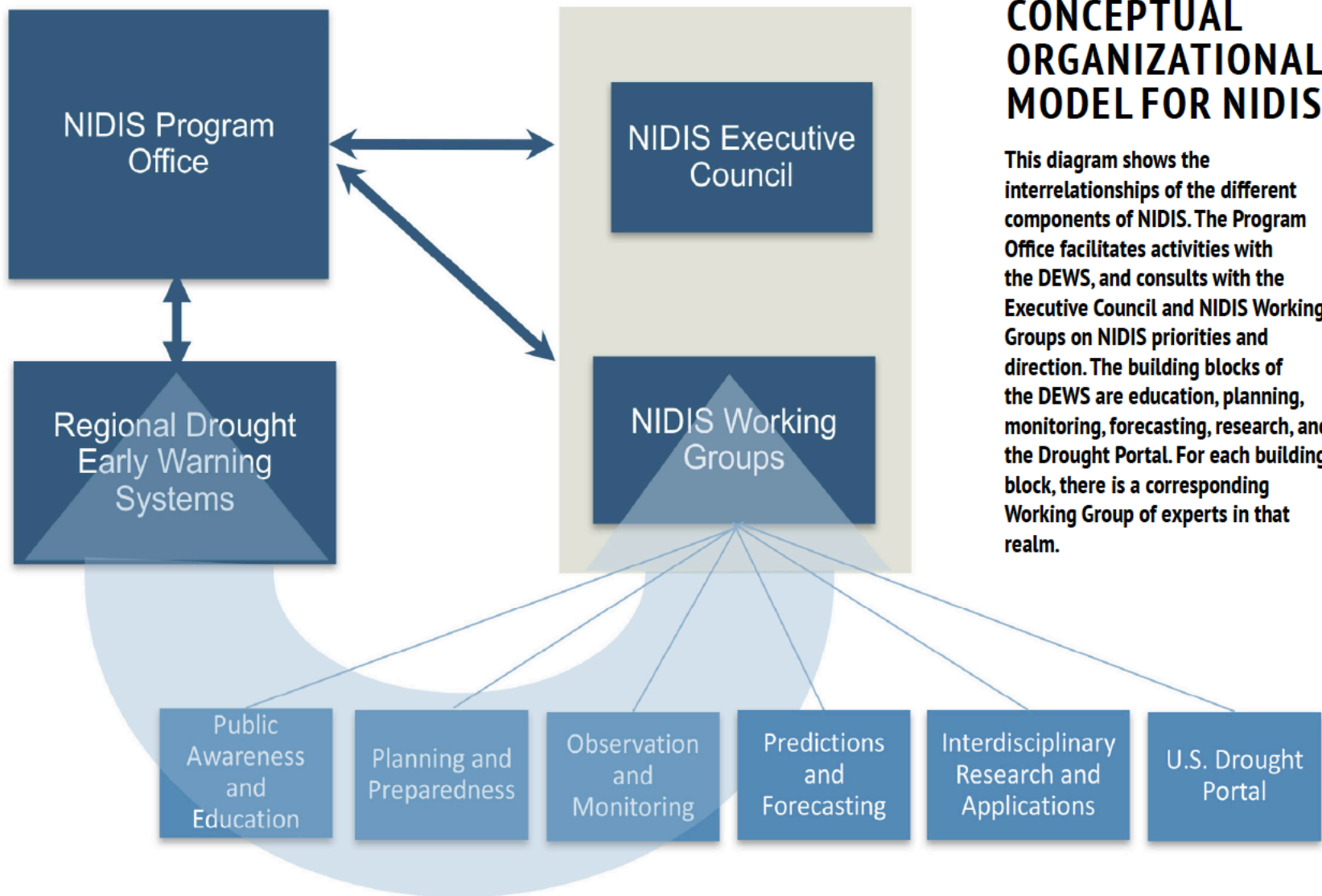
NIDIS was authorized by Congress in 2006 with an interagency mandate to develop and provide a national drought early warning information system.



NIDIS Goals

- Foster leadership and networking among all sectors of the economy and services to monitor, forecast, plan for and cope with the impacts of drought
- Support drought research, including indicators, risk assessment and resilience, as well as assessment of past events
- Develop educational resources, interactive systems, and tools to promote sound decision making, drought awareness, and response



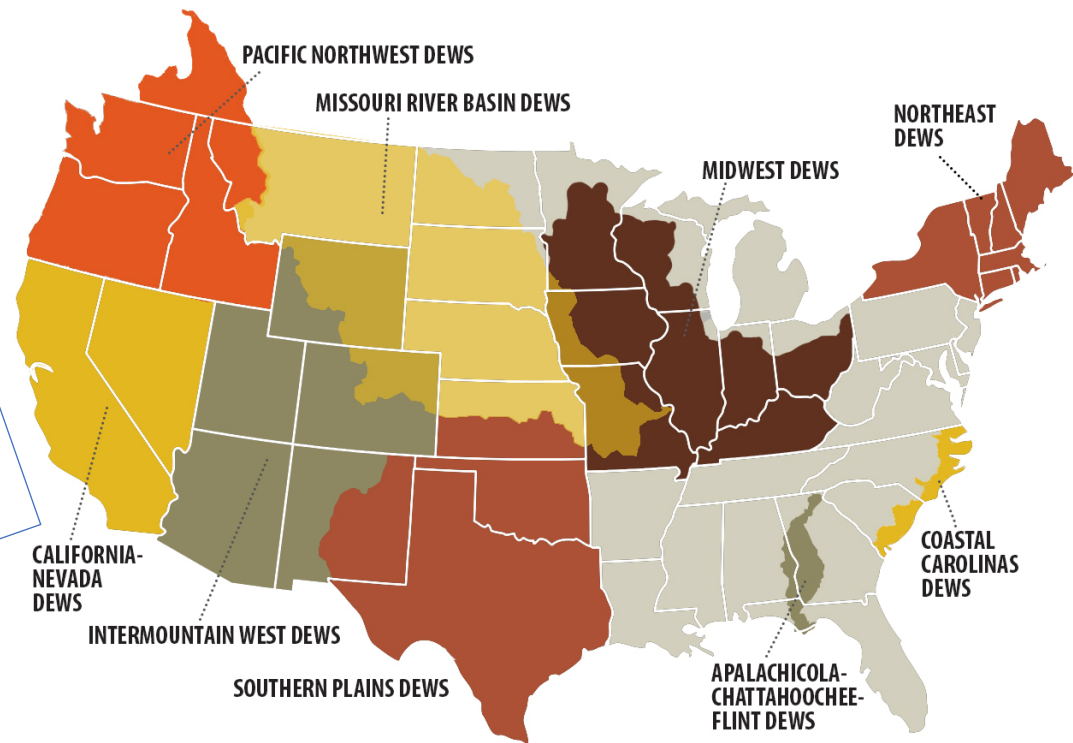
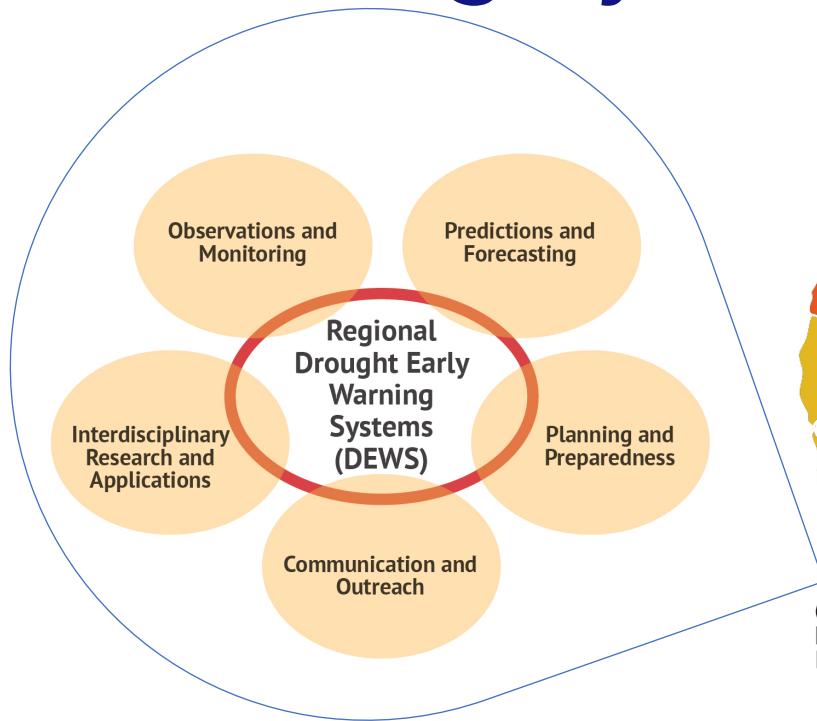


CONCEPTUAL ORGANIZATIONAL MODEL FOR NIDIS

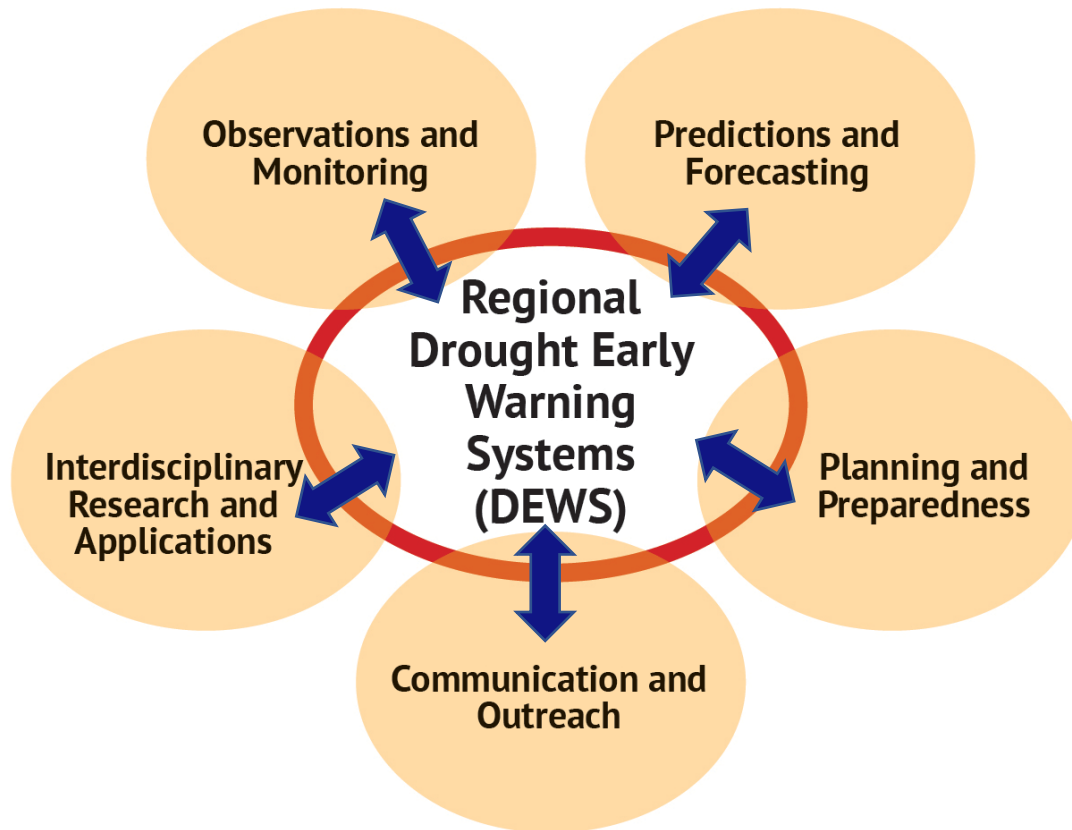
This diagram shows the interrelationships of the different components of NIDIS. The Program Office facilitates activities with the DEWS, and consults with the Executive Council and NIDIS Working Groups on NIDIS priorities and direction. The building blocks of the DEWS are education, planning, monitoring, forecasting, research, and the Drought Portal. For each building block, there is a corresponding Working Group of experts in that realm.



NIDIS Regional Drought Early Warning Systems (DEWS)



Integrating Partner & Stakeholder Feedback



- Robust, engaged DEWS partner network
- Leveraging of resources, programs, and partnerships
- Identifying gaps and needs
- Facilitate opportunities for information sharing and feedback
- Collaborate in co-production



June 2017 Coordination Workshop

DROUGHT MONITORING OPPORTUNITIES:

- **Create opportunities for integration and assessment of monitoring across agencies and sectors as pertains to drought.**
- **Support a collaborative monitoring organization.**
- Facilitate one stop shop for info and standardizing/integrating data sets.
- Facilitate the correlation between measured drought parameters and regional/sector specific impacts.
- Standardize and motivate regional impact reporting.

FORECASTING OPPORTUNITIES:

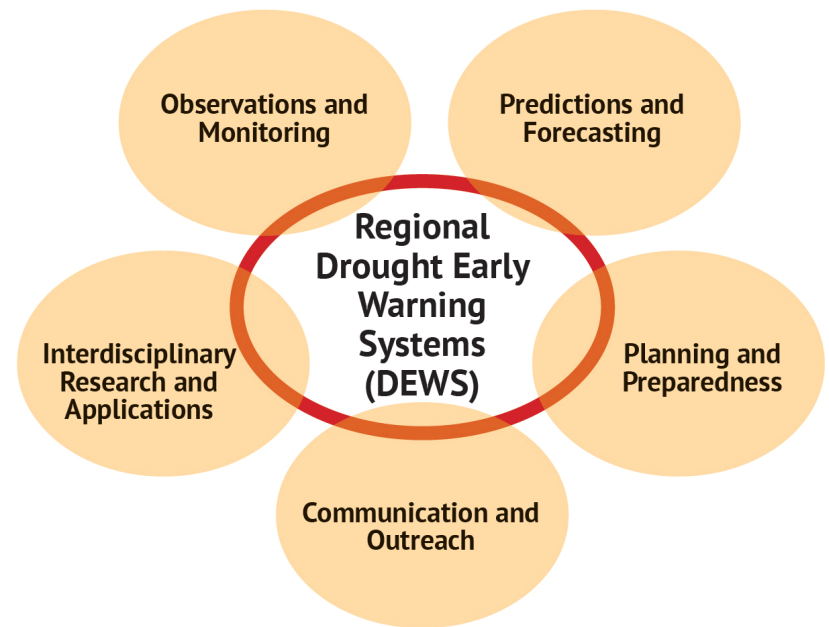
- **Coordination of stakeholder forecasting tools needs and comprehension.**
- **Develop accessible skill assessments of seasonal forecasts, including of streams, groundwater, ET, soil moisture.**
- Hydrological forecasting products for variables such as snow and soil moisture.
- Examine applications of historical performance of forecasts to drought scenario planning.
- Advocacy for more parameter availability for expanded forecast analysis.

COMMUNICATION & CAPACITY BUILDING OPPORTUNITIES:

- **Communicate best available tools and how can be used for informed decision making.**
- **Develop sector based communication approaches, including engaging sector leaders so they can communicate sector impacts.**
- **Create communication networks that move from the drought upwards.**
- **Facilitate communication and integration of risk and uncertainty information for better decision making.**
- Facilitate understanding of how drought information (such as U.S. Drought Monitor) feeds into state and local decision making.
- Facilitate “common ground” between information development and consumer.
- Develop dedicated trainings and education for agency staff on best practices for how to use existing tools, as well as new.
- Local annotation of the USDM.



- *Timely sharing of ongoing research and innovations*
- *Identifying redundancy of tools and information*
- *Regional database of research and stakeholders*
- *Connecting local and national efforts*
- *Better connecting observations with social impacts*
- *Explore planning and preparedness activities and post drought assessments*
- *New Partners: public health, NGOs, private sector, tribes, and economists.*

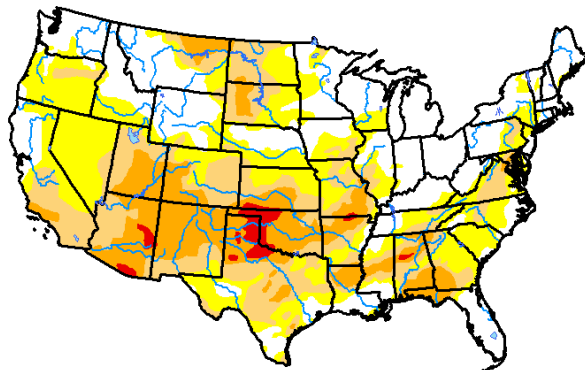


THANK YOU!

Amanda M. Sheffield
NOAA/NIDIS/SIO/UCSD
amanda.sheffield@noaa.gov

U.S. Drought Monitor
Continental U.S. (CONUS)

January 30, 2018
(Released Thursday, Feb. 1, 2018)
Valid 7 a.m. EST



Intensity:

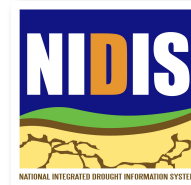
- D0 Abnormally Dry
- D1 Moderate Drought
- D2 Severe Drought
- D3 Extreme Drought
- D4 Exceptional Drought

The Drought Monitor focuses on broad-scale conditions. Local conditions may vary. See accompanying text summary for forecast statements.

Author:
Richard Heim
NCEI/NOAA



<http://droughtmonitor.unl.edu/>



@DroughtGov



@DroughtGov



National Integrated Drought
Information System



(NIDIS) - NOAA Service Account

