

# 2017 Regional Monitoring of Conserved Lands in Western San Diego County



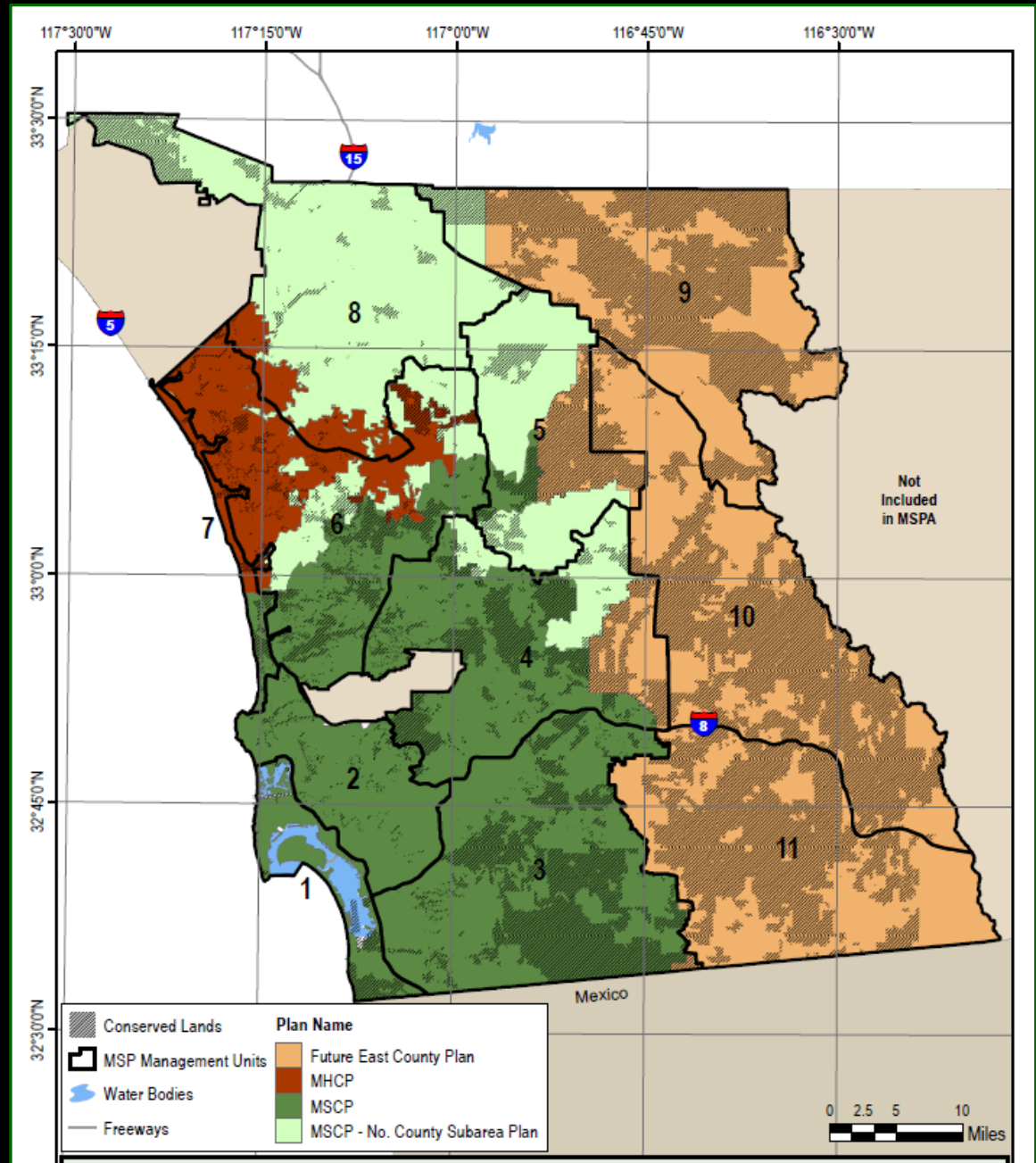
Kristine Preston  
February 2, 2018





## Multiple Species Conservation Plans & Regional Coordination

- Natural Community Conservation Plans/HCPs
- 111 Plant & Animal Species



# San Diego Management & Monitoring Program (SDMMP)



- **Initiated:** 2008
- **Funding:** TransNet Environmental Mitigation Program - \$4M/yr
- **Location:** U.S. Geological Survey - San Diego
- **Staff:** 6 - plus numerous partners\*

## \*Partners

BLM, CDFW, CA LCC, CNPS, CDPR, CALTRANS, CNLM, City Carlsbad, City Chula Vista, City San Diego, CBI, County San Diego, EDI, EHL/EHC, LPLF, military, NCC, NROC, RCA, RSABG, SANDAG, SDAS, SDSU, SDZ-ICR, SDRVC, SELC, TNC, UCD-WHC, USFWS, USFS, USGS, plus others

## 2017 Regional Monitoring Projects

- Rare plant monitoring (17 spp, ~225 occurrences, 5<sup>th</sup> year)
- Shrub ecological integrity (GIS imagery & lidar based)
- Tree mortality (GIS imagery & lidar based)
- Quino checkerspot (larval & host plant, translocation study)
- Hermes copper (sentinel & new sites)
- Southwestern pond turtle (translocation studies)
- Cactus wren (reproduction, dispersal, survival, Yr 4 of 5)
- Southwestern willow flycatcher (reproduction, survival, Yr 4 of 5)
- Burrowing owl (reproduction, dispersal & survival)
- Golden eagle (gps tracking, some nesting monitoring, Yr 4 of 5)
- Mountain lion (gps tracking connectivity & mortality)